



TOP PERFORMERS
LOW-H₂O

KNOCKONWOOD FREESTANDING DBE

Warm power, noble wood

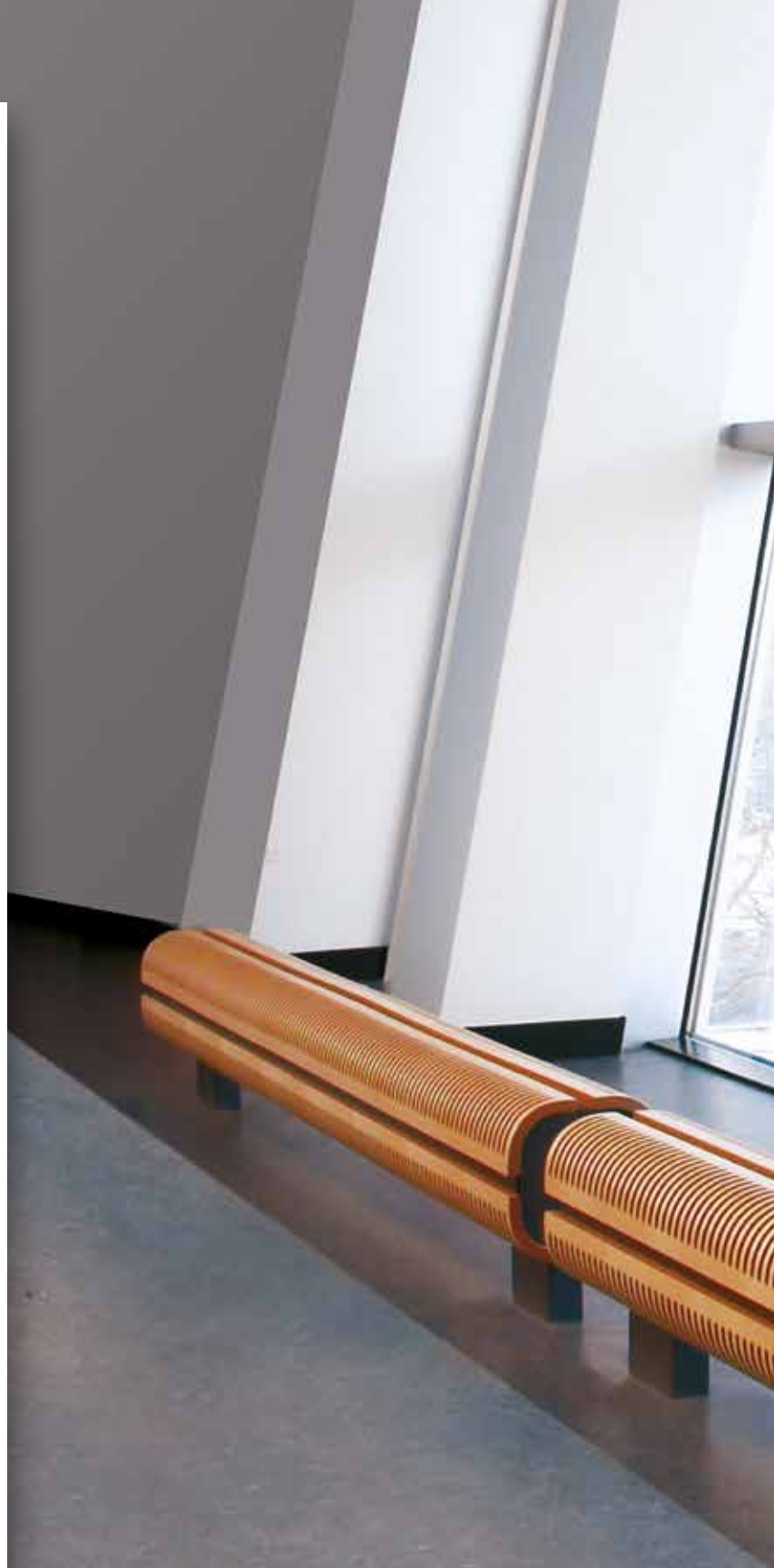
- Developed for the house of the future, “Living Tomorrow”, in Vilvoorde-Belgium.
- Completely pre-assembled including DBE units, connection set and TRV head.
- Casing with curved wooden shell finished in high-grade veneer in 9 wood finishes.
- Hidden control with pre-mounted connection set and TRV head.
- Low-H₂O technology with super conductive and ultra fast heat exchanger for low energy consumption and maximum heat emission.
- DBE (Dynamic Boost Effect) for compact dimensions at super-low water temperatures from 28 °C.
- Safe surface temperature.
- **A 30 year guarantee** on the heat exchanger.

**LIVING
TOMORROW**
Where visions meet



The mark of
responsible forestry

*Certification only for
oak natural,
beech natural,
maple natural,
oak bleached,
beech bleached,
oak wenge-colour*



TOP
PERFOR
MERS

KNOCKONWOOD FREESTANDING DBE

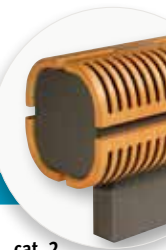






KNOCKONWOOD FREESTANDING DBE

KNUF. 021 LLL 15.XXX/DBE/...



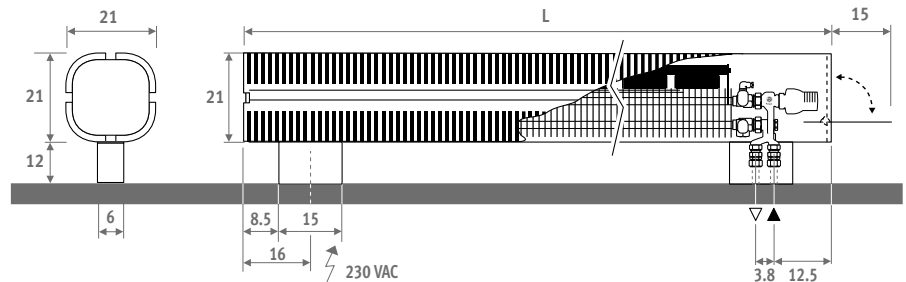
Completely pre-assembled including DBE units, connection set and TRV head

L	STANDBY*			COMFORT			€	
	Type	Watts 75/65	Watts 55/45	Watts 75/65	Watts 55/45	Watts 35/30	cat. 1	cat. 2
110	15	1178	575	1678	1007	420	3581,60	4043,30
130	15	1414	690	2164	1298	541	4068,10	4587,10
170	15	1885	920	2885	1731	721	4846,30	5459,40
210	15	2356	1150	3606	2164	902	5689,80	6406,60

* Stand-by is the static output if the activators are not working. Transition from Stand-by to Comfort is effected automatically in accordance with the thermal need. Boost output see: www.jaga.be

output at 20°C room temperature

DIMENSIONS (in cm)



ORDERING CODE

code	height	length	type	wood
KNUF . 021 110 15 . XXX /DBE/...				
			fill in type of wood	
			fill in sleeve coupling Eurocone	
			Precision metal tube 14/1	114
			Precision metal tube 15/1	115
			Precision metal tube 16/1	116
			RPE/ALU tube 16/2	316
			(other sleeve couplings: see "Connection sets and Valves")	

STANDARD DELIVERY

Delivered in a cardboard box, which can also be used as protection on site after installation.

Standard delivery:

- pre-mounted radiator in one piece with easy to open side panel for setting temperature. Casing in plywood with veneer oak natural 700 (cat. 1), varnished in satin mat. Pre-mounted DBE set with operation, control and power supply 12 VDC included.
- Low-H₂O heat exchanger type 15
- feet and side panels in sandblast grey 001, thermostatic head hidden behind the side panel.
- Jaga-Pro valve and Jaga Comap thermostatic head. Can be connected at either end, inside the foot.
- angled air vent 1/8" and drain plug 1/2"

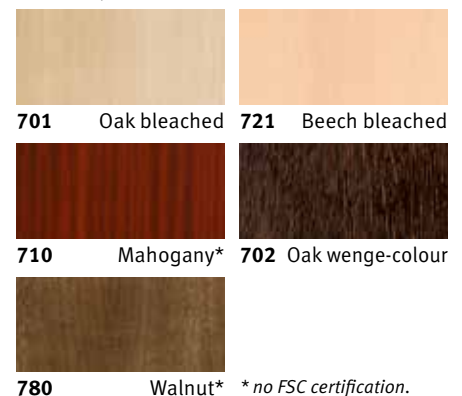
WOOD FINISHES

The wooden casing is finished with a scratch-resistant polyurethane varnish, satin mat, gloss degree 40%. High UV resistance.

Category 1



Category 2



* no FSC certification.