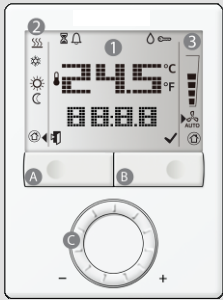




Operating Instructions

RDG100/110/140/160

RDG – the electronic room thermostat that allows you to set the ideal room temperature you want. The thermostat satisfies your individual needs in all operating modes: Comfort, Energy Saving and Protection. The fan operates either in Automatic mode or at the selected speed when using Manual mode. You can either rely on the factory settings or make adjustments that suit your individual needs.



1	Main display	2	Operating mode
	24.5 Room temperature		Heating mode
	Room temperature in degrees Celsius		Electrical heater on
	Room temperature in degrees Fahrenheit		Cooling mode
	Button lock active		Comfort mode
	Alert indicator		Energy Saving mode
	Condensation in the room		Protection mode: Protection against frost
	Temporary timer function active		Indicator for selecting mode
	Additional user information	3	Fan mode
A	Operating mode button		Automatically
B	Fan mode button	Manually:	
C	Rotary knob		Low / medium / high

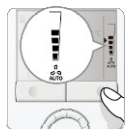
Changing the room temperature



- The room temperature setpoint can be adjusted with the rotary knob when Comfort mode is active
- Turn the rotary knob clockwise (+) to increase, or counterclockwise (-) to decrease the current room temperature setpoint for Comfort mode

The setting range is from 5...40 °C, unless limited by parameters P09 and P10 (for parameter settings, see reverse side).

Adjusting the fan speed



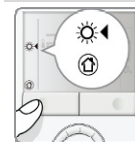
- Press the fan mode button until the desired fan mode is reached
- In Automatic mode , the fan speed is automatically selected by the thermostat depending on the setpoint and the actual room temperature. When the room temperature reaches the setpoint, the fan keeps running at low speed (factory setting)
- In Manual mode, the fan operates independently and always runs at the same speed: Low / medium / high



Note:

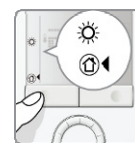
If desired, you can change the fan mode selector option via P03: Manually only, or manually including Protection mode.

Selecting Comfort mode



- Press the operating mode button until symbol appears, indicating that Comfort mode is selected
- In Comfort mode, the thermostat maintains the setpoint which can be readjusted with the rotary knob

Selecting Protection mode



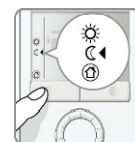
- Press the operating mode button until symbol appears, indicating that Protection mode is selected
- In Protection mode, the plant stops operating. If the room temperature falls below 8 °C, heating is switched on however to protect the room against frost

The setpoints for Protection mode can be changed by your HVAC installer if desired:

Changes made by installer: Frost protection: _____ °C Heat protection: _____ °C

Selecting Energy Saving mode

In Energy Saving mode, the room temperature is maintained at a lower or higher setpoint, thus saving energy and money.



- When selecting Energy Saving mode, make sure that parameter P02 is set to 2
- Press the operating mode button until symbol appears
- You can change the preselected setpoint by adjusting parameters P11 and P12 (for parameter settings, see reverse side)

Important: The setpoint for Energy Saving mode can be set to OFF. This means that the thermostat is deactivated! Risk of frost, i.e. no protective heating or cooling function is provided!

Energy saving tips without sacrificing comfort:

- Air out rooms for short periods of time only, but properly, with the windows wide open
- Never allow the room temperature to exceed 21 °C through heating, and to fall below 25.5 °C through cooling

Button lock

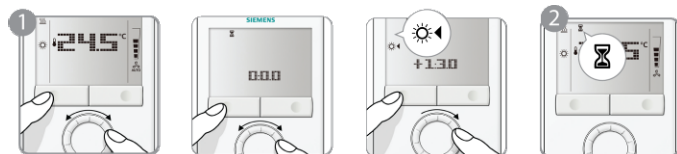


- To lock or unlock the buttons manually, press and hold the fan mode button for 3 seconds. The buttons are locked or unlocked in this manner if P14 is set to 2
- If P14 is set to 1, the thermostat automatically locks the buttons 10 seconds after the last adjustment



Temporary timer for extended presence or absence

The Comfort and Energy Saving modes can be temporarily extended by 0.5 to 9.5 hours using the temporary timer.



- To set the temporary timer, press and hold the operating mode button for maximum 3 seconds. While holding the button, turn the rotary knob clockwise or counterclockwise as required.
 - Turn the rotary knob clockwise to extend Comfort mode.
Display: ☀️ 0...+9:30
 - Turn the rotary knob counterclockwise to extend Energy Saving mode.
Display: 🌙 0...-9:30

2. Release the operating mode button and the mode is temporarily changed, indicated by ⌚.

After the temporary timer has elapsed, the thermostat will resume operation in the operating mode that was active before:

Extended Comfort mode New operating mode = Energy Saving
 Extended Energy Saving mode New operating mode = Comfort

- If Energy Saving mode cannot be selected via the operating mode button (P02 ≠ 2), Protection mode will be used for extended absence instead!
- The temporary timer function is aborted whenever a new setting is made

Note:

Extended Comfort mode is also possible when an external contact such as a keycard switch or central time clock is active. To enable this function, the time for the extended period must be set via parameter P68.

Changing from heating to cooling mode

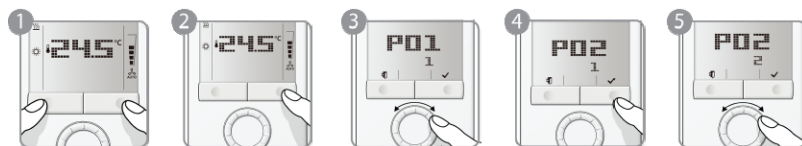


- Depending on the type of plant, the changeover from heating to cooling (or vice versa) is made either automatically by a changeover sensor or a remote changeover switch, or manually by pressing the operating mode button (see parameter P01)
- To select cooling or heating manually (P01=2), press the operating mode button until the desired mode appears



- With automatic changeover or continuous heating / cooling, symbols ☀️ / ❄️ indicate that the system currently operates in heating or cooling mode
- With manual changeover, symbol 🔄 appears, indicating that the system currently operates in heating or cooling mode

Control parameters



If you want to change control parameters, proceed as follows:

- Press both buttons simultaneously for at least 3 seconds.
- Release them and, within 2 seconds, press the right button again for 3 seconds. The display shows P01.
- Select the required parameter by turning the rotary knob.
- Press button ✓ (OK). The current value of the selected parameter starts blinking and can be changed by turning the rotary knob.
- Press button ✓ (OK) to confirm the adjusted value, or ⏏ (Esc) to cancel the change.

If you wish to adjust additional parameters, repeat steps 3 through 5, or press ⏏ (Esc) to leave the parameter setting mode.

Parameter list

No.	Parameter name	Default value	Setting range	Adj.
P01	Control sequence	2-pipe / 2-stage: 1 = cooling only 4-pipe: 4 = H and C	0 = heating only 1 = cooling only 2 = H/C changeover, manually 3 = H/C changeover, auto 4 = heating and cooling	
P02	Mode selection via operating mode button	1	1 = Comfort / Protection mode 2 = Comfort / Energy Saving / Protection mode	
P03	Mode selection via fan mode button	0	0 = Auto / Manually 1 = Manually 2 = Auto / Manually / Protection mode	
P04	Selection of °C or °F	0	0 = °C 1 = °F	
P05	Sensor calibration	0.0 K	- 3...3 K	
P06	Standard temperature display	0	0 = room temperature 1 = setpoint	
P07	Additional display information	0	0 = --- (no display) 1 = ☀️C and ❄️F	
P08	Comfort basic setpoint	21 °C	5...40 °C	
P09	Minimum setpoint limitation in Comfort mode	5 °C	5...40 °C	
P10	Maximum setpoint limitation in Comfort mode	35 °C	5...40 °C	
P11	Setpoint for heating in Energy Saving mode (WheatE-saving)	15 °C	OFF, 5 °C...WcoolE-saving	
P12	Setpoint for cooling in Energy Saving mode (WcoolE-saving)	30 °C	OFF, WheatE-saving...40°C	
P13	Electrical heater in cooling mode	ON	OFF = disabled ON = enabled	
P14	Button lock	0	0 = disabled 1 = automatically 2 = manually	

The control parameters displayed depend on the DIP switch settings made